

# PULVERIZERS

## EXCAVATOR ATTACHMENTS



---

Tracked Excavators    317-395  
Wheeled Excavators    M314-M322  
Material Handlers    MH3022-MH3026

Not all attachments are available in all regions. Consult your Cat® dealer for specific attachments available in your region.



# CAT® PULVERIZERS FOR EXCAVATORS

Cat® P300 Series Primary Pulverizers are designed for applications such as cutting, breaking, and crushing concrete structures during demolition. Cat P200 Series Secondary Pulverizers are designed to reduce the size of debris, clear up a job site, and separate concrete from rebar at ground level after demolition.



## CAT PRIMARY AND SECONDARY PULVERIZERS

Cat pulverizers are perfectly matched to Cat excavators so you can deliver productive concrete demolition without compromising performance or machine health.

- + PRIMARY PULVERIZERS: P318, P324, P332, P345, P365
- + SECONDARY PULVERIZERS: P214, P218, P224, P232, P245

# PURPOSE BUILT FOR FAST DEMOLITION

---

Full of purpose-built features, Cat primary and secondary pulverizers are built to excel in demolition applications.

## HIGH PERFORMANCE

Demolition needs to be done fast and efficiently. Cat pulverizer jaws are designed to cut through material quickly to enhance your machine's overall operating efficiency and help reduce fuel consumption. Precisely position primary pulverizer jaws with 360-degree rotation and visibility to the moveable jaw during demolition. The oversized cylinder on the non-rotating secondary pulverizer delivers a strong crushing force to reduce concrete and separate rebar. The Speed Booster valve actively balances speed and power, delivering fast cycle times and strong closing force to help increase productivity.



---

## EASY TO MAINTAIN

Don't let maintenance costs eat into your business. Daily wear parts inspection and grease points are accessible from the ground. Replaceable wear parts can be swapped quickly in the field and do not require surface welding to help reduce service time. The inspection panel provides easy access to help you perform maintenance safely. Hydraulic components are shielded from damage inside the housing, helping decrease downtime on the job site. Good maintenance practices over time will help increase the life of your pulverizer.



---

## RELIABLE DURABILITY

Built for long life in demolition applications, Cat pulverizers are manufactured with high-strength, abrasion-resistant steel, especially in excessive wear areas. Reinforced cylinder rod hinges on the moveable jaw are designed to help boost durability and life of the pulverizer. The C-shaped cylinder guard provides extra protection against concrete demolition. Cat pulverizers have a versatile use across demolition applications, making them your choice for a wide variety of job sites.

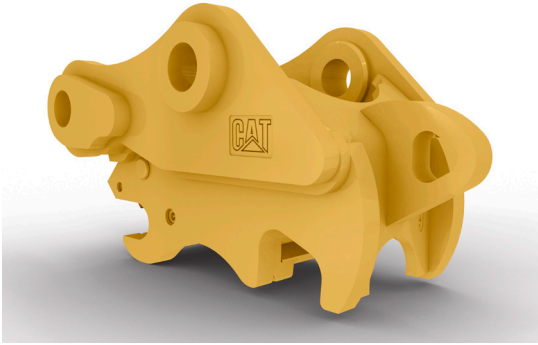


# QUICK COUPLERS

## VERSATILITY AND CONVENIENCE FOR YOUR OPERATION

---

Quick couplers make Cat attachments interchangeable, so a fleet of machines can share a common tool inventory. One person can effortlessly switch tools and move from task to task. Quick couplers increase the machine's versatility on the job site. Caterpillar offers pulverizers for each of the following coupler styles.



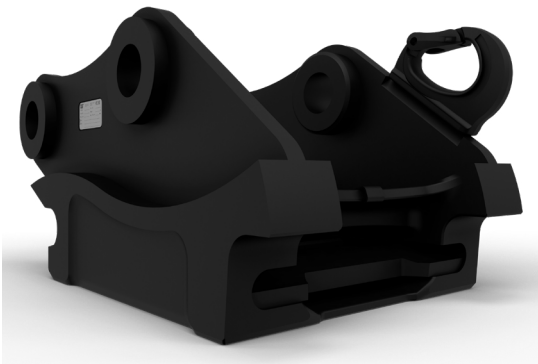
### **PIN GRABBER COUPLERS**

Pin grabber-style couplers allow the machine to pick up and engage virtually any pulverizer and attachment equipped with standard pins. No modifications are required. They are easy to activate, easy to engage, and the easiest way to improve productivity on your job site.



### **CW DEDICATED COUPLERS**

This wedge-style coupler engages tools equipped with hooks. Both hydraulic and manual versions are available.



### **S TYPE COUPLERS**

This wedge-style coupler engages tools equipped with S type hooks. Hydraulic versions are available.

## PL161 ATTACHMENT LOCATOR

# EQUIPMENT MANAGEMENT

## TRACK YOUR ASSETS

The Cat PL161 attachment locator is a Bluetooth® device designed to let users know where their attachments are across all work sites, reduce the number of lost attachments, and plan for attachment maintenance and replacement.

## WORK TOOL RECOGNITION

Save more time and energy with the available work tool recognition feature. A simple shake of the attached tool confirms its identity and ensures all the attachment settings (pressure, flow, and dimensions) are correct so you can work quickly and efficiently.

## ASSET SECURITY

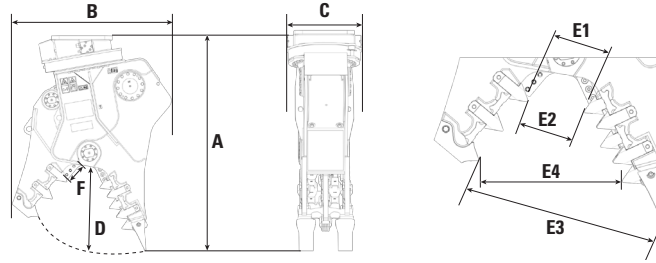
The PL161 integrates easily into VisionLink® for full fleet management of machines and attachments from one smartphone or tablet dashboard to view location and tracking details.



# TECHNICAL SPECIFICATIONS

## Dimensions

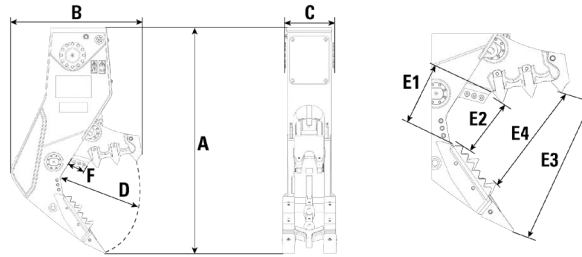
### Primary Pulverizer



Model	Part No.	(A) Overall Length		(B) Height		(C) Width		(D) Jaw Depth		(F) Cutter Length	
		mm	in	mm	in	mm	in	mm	in	mm	in
P318 Primary Pulverizer	591-8124	2125	83.7	1525	60.0	790	31.1	660	26.0	150	5.9
P324 Primary Pulverizer	591-8125	2305	90.7	1700	66.9	790	31.1	730	28.7	200	7.9
P332 Primary Pulverizer	591-2094	2350	92.5	2005	78.9	1005	39.6	820	32.3	200	7.9
P345 Primary Pulverizer	627-2054	2525	99.4	2280	89.8	980	38.6	910	35.8	225	8.9
P365 Primary Pulverizer	634-9604	2865	112.8	2520	99.2	1085	42.7	1085	42.7	225	8.9

Model	Part No.	Jaw Opening								Fixed Jaw Width		Moving Jaw Width		Weight	
		(E1) at primary cutter		(E2) at secondary tooth		(E3) at tip		(E4) at outer teeth		mm	in	mm	in	kg	lb
		mm	in	mm	in	mm	in	mm	in	mm	in	mm	in	kg	lb
P318 Primary Pulverizer	591-8124	310	12.2	305	12.0	1085	42.7	825	32.5	620	24.4	335	13.2	2080	4,586
P324 Primary Pulverizer	591-8125	375	14.8	360	14.2	1210	47.6	910	35.8	640	25.2	380	15.0	2755	6,074
P332 Primary Pulverizer	591-2094	395	15.6	465	18.3	1315	51.8	1015	40.0	660	26.0	380	15.0	3325	7,330
P345 Primary Pulverizer	627-2054	440	17.3	420	16.5	1430	56.3	1115	43.9	750	29.5	460	18.1	4718	10,401
P365 Primary Pulverizer	634-9604	480	18.9	630	24.8	1635	64.4	1320	52.0	820	32.3	520	20.5	6230	13,735

### Secondary Pulverizer



Model	Part No.	(A) Overall Length		(B) Height		(C) Width		(D) Jaw Depth		(F) Cutter Length	
		mm	in	mm	in	mm	in	mm	in	mm	in
P214 Secondary Pulverizer	623-0056	2210	87.0	1310	51.6	555	21.9	650	25.6	115	4.5
P218 Secondary Pulverizer	586-9549	2465	97.0	1450	57.1	620	24.4	770	30.3	150	5.9
P224 Secondary Pulverizer	583-6803	2725	107.3	1585	62.4	660	26.0	845	33.3	200	7.9
P232 Secondary Pulverizer	584-9938	2995	117.9	1755	69.1	670	26.4	930	36.6	200	7.9
P245 Secondary Pulverizer	630-2700	3390	133.5	2055	80.9	830	32.7	1070	42.1	225	8.9

Model	Part No.	Jaw Opening								Fixed Jaw Width		Moving Jaw Width		Weight	
		(E1) at primary cutter		(E2) at secondary tooth		(E3) at tip		(E4) at outer teeth		mm	in	mm	in	kg	lb
		mm	in	mm	in	mm	in	mm	in	mm	in	mm	in	kg	lb
P214 Secondary Pulverizer	623-0056	280	11.0	295	11.6	885	34.8	650	25.6	555	21.9	310	12.2	1490	3,285
P218 Secondary Pulverizer	586-9549	340	13.4	420	16.5	1070	42.1	825	32.5	620	24.4	335	13.2	2000	4,409
P224 Secondary Pulverizer	583-6803	405	15.9	475	18.7	1175	46.3	900	35.4	660	26.0	380	15.0	2700	5,952
P232 Secondary Pulverizer	584-9938	445	17.5	575	22.6	1280	50.4	1005	39.6	670	26.4	380	15.0	3460	7,628
P245 Secondary Pulverizer	630-2700	500	19.7	610	24.0	1495	58.9	1150	45.3	785	30.9	460	18.1	4915	10,836

# TECHNICAL SPECIFICATIONS

## Specifications

Model	Part No.	Cycle Time		Cutting/Crushing Forces						Recommended Carrier Weights			
		Open	Close	at primary cutter		at primary tooth		at tip		Minimum		Maximum	
		s	s	kN	st	kN	st	kN	st	kg	lb	kg	lb
P318 Primary Pulverizer	591-8124	1.6	1.0	2740	308	1120	126	795	89	18 000	39,700	25 000	55,100
P324 Primary Pulverizer	591-8125	1.8	1.2	3965	446	1620	182	1175	132	24 000	52,900	35 000	77,200
P332 Primary Pulverizer	591-2094	1.9	1.3	5010	563	1910	215	1440	162	32 000	70,500	50 000	110,200
P345 Primary Pulverizer	627-2054	1.9	1.4	5905	664	2385	268	1710	192	45 000	99,200	68 000	149,900
P365 Primary Pulverizer	634-9604	2.1	1.6	7330	824	2675	301	2030	228	65 000	143,300	95 000	209,400
P214 Secondary Pulverizer	623-0056	1.6	1.0	2345	264	1320	148	655	74	14 000	30,900	19 000	41,900
P218 Secondary Pulverizer	586-9549	1.8	1.2	3125	351	1710	192	955	107	18 000	39,700	25 000	55,100
P224 Secondary Pulverizer	583-6803	1.9	1.3	3640	409	1990	224	1145	129	24 000	52,900	35 000	77,200
P232 Secondary Pulverizer	584-9938	1.9	1.4	4265	479	2240	252	1360	153	32 000	70,500	50 000	110,200
P245 Secondary Pulverizer	630-2700	2.1	1.6	6485	729	2355	265	1830	206	45 000	99,200	70 000	154,300

## Hydraulic Requirements

Model	Part No.	Jaw Circuit				Rotator Circuit			
		Max. Operating Pressure		Max. Oil Flow		Max. Operating Pressure		Max. Oil Flow	
		kPa	psi	L/min	gpm	kPa	psi	L/min	gpm
P318 Primary Pulverizer	591-8124	33 000	4,786	150	40	14 000	2,031	40	11
P324 Primary Pulverizer	591-8125	33 000	4,786	225	59	14 000	2,031	40	11
P332 Primary Pulverizer	591-2094	33 000	4,786	280	74	16 000	2,321	40	11
P345 Primary Pulverizer	627-2054	33 000	4,786	360	95	16 000	2,321	45	12
P365 Primary Pulverizer	634-9604	33 000	4,786	450	119	16 000	2,321	50	13
P214 Secondary Pulverizer	623-0056	33 000	4,786	150	40	–	–	–	–
P218 Secondary Pulverizer	586-9549	33 000	4,786	225	59	–	–	–	–
P224 Secondary Pulverizer	583-6803	33 000	4,786	280	74	–	–	–	–
P232 Secondary Pulverizer	584-9938	33 000	4,786	360	95	–	–	–	–
P245 Secondary Pulverizer	630-2700	33 000	4,786	450	119	–	–	–	–

For more complete information on Cat products, dealer services and industry solutions, visit us on the web at [www.cat.com](http://www.cat.com).

Materials and specifications are subject to change without notice. Featured machines in photos may include additional equipment. See your Cat dealer for available options.

© 2024 Caterpillar. All Rights Reserved. CAT, CATERPILLAR, LET'S DO THE WORK, their respective logos, "Caterpillar Yellow", the "Power Edge" and Cat "Modern Hex" trade dress as well as corporate and product identity used herein, are trademarks of Caterpillar and may not be used without permission.

VisionLink is a trademark of Caterpillar Inc., registered in the United States and in other countries.

[www.cat.com](http://www.cat.com) [www.caterpillar.com](http://www.caterpillar.com)

GEDQ9311-01 (01-2024)  
Replaces: GEDQ9311-00  
(Afr-ME, Aus-NZ,  
Europe, Eurasia, Japan,  
N Am, S Am)

