



Cat[®] TH407

Telehandler

Specifications

Engine

Engine Model (Standard)	Cat [®] C4.4 Mechanical DITAAC	
Engine Model (Optional)	Cat [®] C4.4 Electronic DITAAC-ACERT™	
Gross Power (Standard)	74.5 kW	101 hp
Gross Power (Optional)	93.1 kW	126 hp
Maximum Torque (Standard)	410 Nm at 1400 rpm	
Maximum Torque (Optional)	496 Nm at 1400 rpm	
Bore	105 mm	4.13 in
Stroke	127 mm	4.99 in
Displacement	4.4 L	268.5 cu in

Weights

Operating Weight with Carriage & Forks	7700 kg	16,980 lb
--	---------	-----------

Operating Specifications

Rated Load Capacity	3700 kg	8,150 lb
Maximum Lift Height	7.30 m	24 ft
Maximum Forward Reach	3.76 m	12 ft 3 in
Top Travel Speed	40 kph	25 mph
Capacity at Max Height	1800 kg	4,000 lb
Capacity at Max Reach	1500 kg	3,300 lb
Turning Radius over Tires	3.75 m	12 ft 4 in
Drawbar Pull 74.5 kW	8500 kg	18,740 lb
Drawbar Pull 93.1 kW	8900 kg	19,625 lb

Service Refill Capacities

Fuel Tank	150 L	39.63 gal
Hydraulic Tank	90 L	23.78 gal

Tires

Standard	15.5/80-24 16PR
Optional	400/80 R24 Power CL
	440/80 R24 Power CL
	460/70 R24 XMCL
	500/70 R24 XMCL
	15.50 x 25 SGL

Brakes

- Service brakes are inboard wet disc brakes on front axle
- Parking brakes are mechanical on front axle

Hydraulic System

Maximum System Pressure	250 bar	3,625 psi
Maximum Pump Flow	150 L/min	39.63 gal/min
Pump Type	Variable displacement load sensing axial piston pump	
Auxiliary Hydraulic Supply (Intermittent)	80 L/min	21.13 gal/min
Auxiliary Hydraulic Supply (Continuous)	60 L/min	15.85 gal/min

- Auxiliary Hydraulic Circuit used for all attachments equipped with cylinders or other hydraulic components. Consists of valves, controls, and hydraulic lines.

Transmission Speeds

Forward—1	7 kph	4.3 mph
Forward—2	12 kph	7.45 mph
Forward—3	21 kph	13 mph
Forward—4	32 kph	19.8 mph
Forward—5*	40 kph	25 mph
Reverse—1	7 kph	4.3 mph
Reverse—2	12 kph	7.45 mph
Reverse—3	21 kph	13 mph

*ACERT Engine Option Only

Boom Performance

Boom Up	7.5 Seconds
Boom Down	5.1 Seconds
Tele In	4.8 Seconds
Tele Out	5.7 Seconds
Tilt Forward (dump)	3 Seconds
Tilt Backward	3 Seconds
Combined—Up and Out	11.5 Seconds
Combined—Down and In	6.6 Seconds

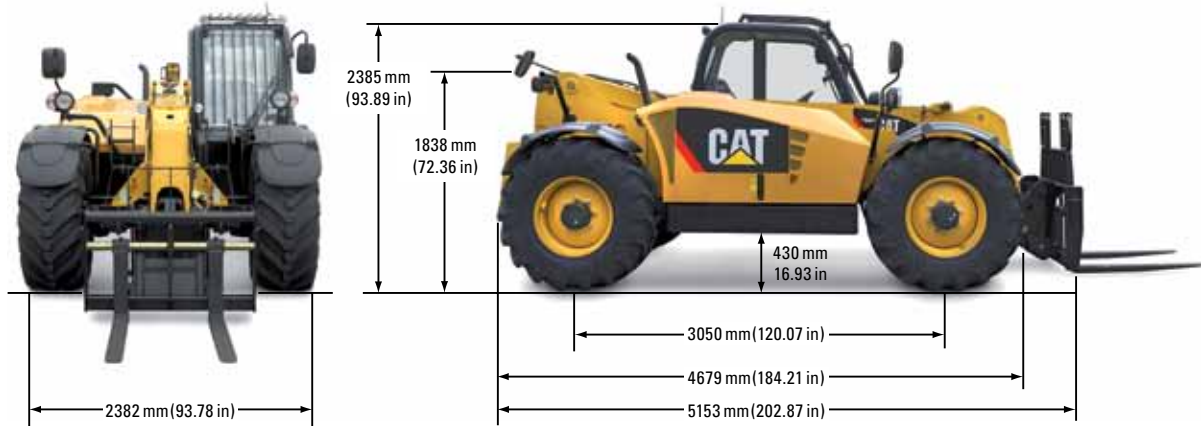
Instruments

- Engine speed, boom angle, machine speed, operation hours, % of continuous flow selected, gear selected and direction

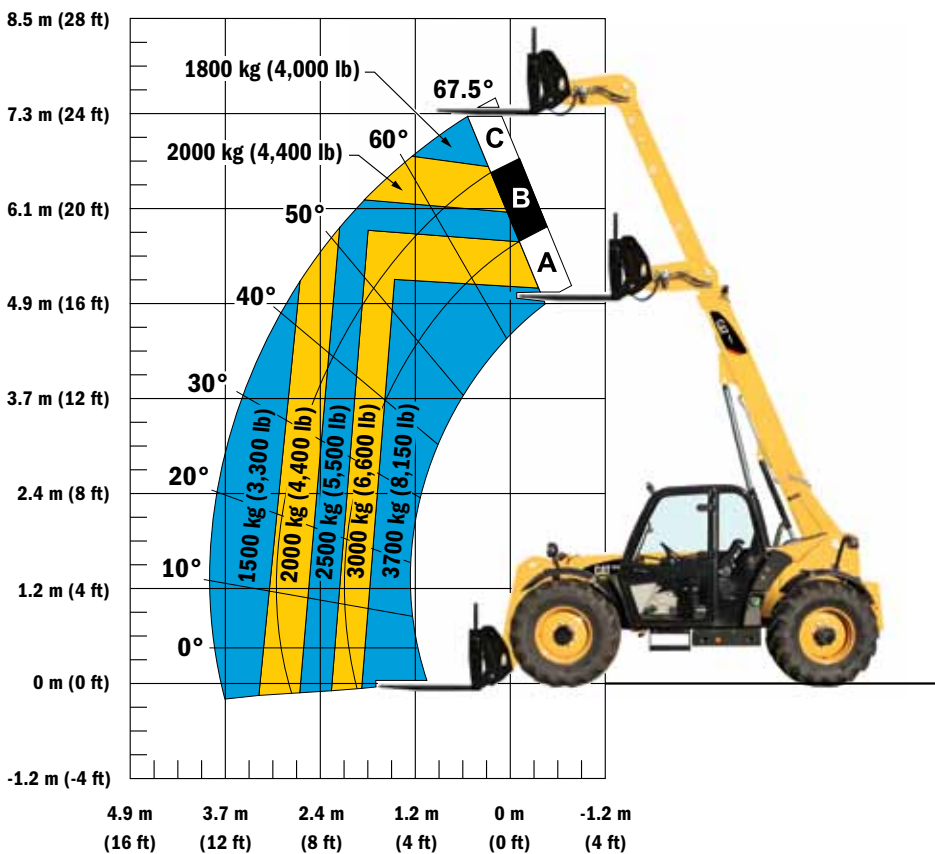
TH407 Telehandler

Dimensions

All dimensions are approximate.



Load Chart and Dimensions



IMPORTANT

Rated lift capacities shown are with machine equipped with carriage and pallet forks. The machine must be level on a firm surface with undamaged, properly inflated tires. Machine specifications and stability are based on rated lift capacities at specific boom angles and boom lengths. (If specifications are critical, the proposed application should be discussed with your dealer.)

DO NOT exceed rated lift capacity loads, as unstable and dangerous machine conditions will result.

DO NOT tip the machine forward to determine the allowable load.

Use only JLG approved attachments with proper material handler model/attachment load capacity charts displayed in the operator's cab. OSHA requires all rough terrain forklift operators be trained according to OSHA 29 CFR 1910.178 (1).

Due to continuous product improvements, machine specifications and/or equipment changes may be made without prior notification. This machine meets or exceeds ANSI/ITSDF B56.6-2005 as originally manufactured for intended applications.

For more complete information on Cat products, dealer services, and industry solutions, visit us on the web at www.cat.com

AEHQ5966-09 (12-2010)

©2010 Caterpillar
All rights reserved.
Printed in U.S.A.

Materials and specifications are subject to change without notice. Featured machines in photos may include additional equipment. See your Cat dealer for available options.

CAT, CATERPILLAR, SAFETY.CAT.COM, their respective logos, "Caterpillar Yellow" and the POWER EDGE trade dress, as well as corporate and product identity used herein, are trademarks of Caterpillar and may not be used without permission.

