



Cat[®] CB8

TANDEM VIBRATORY ROLLER

Top Features

The Cat[®] CB8 is an 8 ton roller with 1700 mm (67") tandem vibratory drums. It excels on a variety of asphalt mix designs as well as other granular materials.

- **Exceptional Visibility and Control** with hand-wheel steering technology, touch-pad machine functions, Eco-mode operation, and automatic speed control.
- **Smooth Operating Powertrain** with C3.4B engine that meets U.S. EPA Tier 4 Interim and EU Stage IIIB emissions.
- **Versatile Vibratory Systems** include choice of two amplitude/ two frequency or 5-amplitude systems. Versatile systems provide performance for both thick and thin lifts as well as varying paving speeds.
- **Cat Compaction Control** keeps the operator informed for optimized efficiency. Infrared temperature sensors combined with mapping keep the operator informed of when optimal temperatures exist and where compaction has taken place. Temperature Mapping records data for analysis, while Pass-Count Mapping keeps the operator informed of where mat coverage has taken place and the number of passes made.
- **Industry-Leading Water Spray System** features a single fill point, dual water pumps, triple filtration, intermittent operation and high capacity for reliable performance. An optional freeze protection kit offers protection in cold temperatures.
- **Machine to Machine Communication** provides real time progress of multiple machines. It allows operators to monitor each others rolling pattern and continue the pass where it was left off. The system greatly enhances nighttime operation when low lighting conditions exist.

Specifications

Weights

Operating Weight – w/ROPS/FOPS/CAB

Standard machine	8720 kg	19,224 lb
Maximum machine	9470 kg	20,878 lb
Static linear load	25.6 kg/cm	143 lb/in

Operating Weight – w/ROPS/FOPS/CANOPY

Standard machine	8520 kg	18,783 lb
Maximum machine	9250 kg	20,343 lb
Static linear load	25.1 kg/cm	141 lb/in

Service Refill Capacities

Fuel Tank	208 L	55 gal
Fuel Usage (50% duty)	12 hours	
Cooling System	18 L	4.7 gal
Engine Oil	9 L	2.4 gal
Hydraulic Tank	36 L	9.5 gal
Water Tank	742 L	196 gal

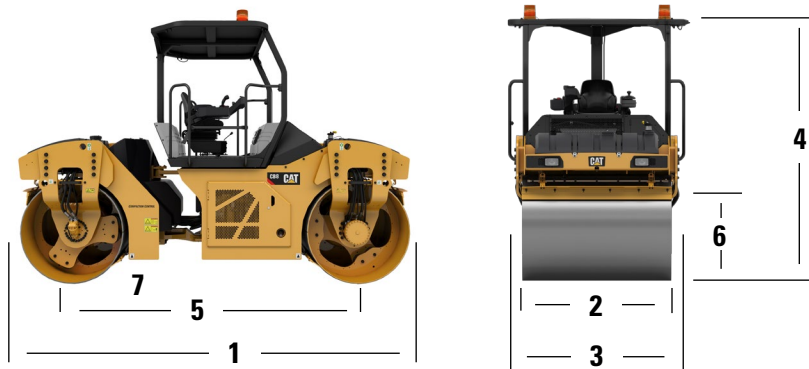
Engine – Powertrain

Engine Model	Cat C3.4B	
Number of Cylinders	4	
Rated Speed	2200 rpm	
Bore	99 mm	3.89"
Stroke	110 mm	4.33"
Gross Power:		
Tier 4 Interim, Stage IIIB	75 kW	100 hp (l), 102 hp (m)
Speed Ranges:		
Low	0 - 7 km/hr	4.3 mph
High	0 - 12 km/hr	7.5 mph
Gradeability (no vibs):		
Solid drum	35°	
Steering (Inside)	4.3 m	(14' 1")
Articulation Angle	35°	
Hitch Oscillation	± 6°	



CB8 Tandem Vibratory Roller

Dimensions



1 Overall Length	4565 mm	14' 5"
2 Drum Width	1700 mm	67"
Drum Offset	170 mm	6"
Drum Shell Thickness	16 mm	0.67"
Drum Diameter	1108 mm	44"
3 Overall width	1862 mm	6' 1"
4 Height at ROPS/FOPS	2980 mm	9' 9"
Height at Cab	2980 mm	9' 9"
5 Wheelbase	3300 mm	10' 10"
6 Curb Clearance	898 mm	35"
7 Ground Clearance	226 mm	9"

Vibratory Systems

2-Amplitude, 2-Frequency – Solid Drum

Low Frequency – Hz (vpm)	53.3	(3200)
Amplitude – mm (in)	0.56	(0.022)
Centrifugal Force (low) – kN (lbF)	53.3	(11,982)
High Frequency – Hz (vpm)	63.3	(3800)
Amplitude – mm (in)	0.27	(0.010)
Centrifugal Force (high) – kN (lbF)	78.3	(17,603)

2-Amplitude, 2-Frequency – Solid Drum (CE)*

Low Frequency – Hz (vpm)	50	(3000)
Amplitude – mm (in)	0.56	(0.022)
Centrifugal Force (high) – kN (lbF)	68.8	(15,467)
High Frequency – Hz (vpm)	57	(3420)
Amplitude – mm (in)	0.27	(0.010)
Centrifugal Force (low) – kN (lbF)	43.2	(9,712)

* Meets French VT1 Method Spec Classification

5-Amplitude - Solid Drum (VT1)*

Frequency – Hz (vpm)	53.3	(3200)
Amplitude – mm (in)	high	0.55 (0.022)
	medium high	0.48 (0.019)
	medium	0.39 (0.015)
	medium low	0.31 (0.012)
	low	0.22 (0.009)
Centrifugal Force (high) – kN (lbF)	76.9	(17,288)
Centrifugal Force (low) – kN (lbF)	30.2	(6,789)

* Meets French VT1 Method Spec Classification

Standard and Optional Equipment

STANDARD EQUIPMENT:

- 742 L (196 gal) Water Tank Capacity
- 12-Volt Electrical System
- 120 Amp Alternator
- 5-Amplitude Vibratory System
- Locking Engine Compartment
- ROPS/FOPS Platform
- Sealed Pod Vibratory System
- Suspension Seat
- Two-Speed Hydrostatic Transmission
- Triple Filtered Water Spray System
- Working Lights

OPTIONAL EQUIPMENT:

- Air Conditioning
- Air Suspension Seat w/Heat
- Bio-Degradeable Oil
- Cat Compaction Control (Temperature and Pass-Count Mapping)
- CMV Sensor
- Edge Cutter
- Freeze Protection Kit
- Halogen Lights w/Drum Edge Lights
- High Ambient Cooling System
- High Intensity Discharge (HID) w/ Drum Edge Lighting
- LED Lighting
- Machine to Machine Communication
- Mirrors
- Product Link
- Recording Module (cab only)
- ROPS/FOPS Cab
- Roading Lights
- Temperature Gauge (single sensor)
- Two Amplitude, Two Frequency Vibratory System
- Water Distribution Mats (cocoa)
- Water Distribution Mats (rubber)
- Warning Beacon

For more complete information on Cat products, dealer services, and industry solutions, visit us on the web at www.cat.com

QEHQ2239 (1-17)

© 2017 Caterpillar
All Rights Reserved

Materials and specifications are subject to change without notice. Featured machines in photos may include additional equipment. See your Cat dealer for available options.

CAT, CATERPILLAR, SAFETY.CAT.COM, their respective logos, "Caterpillar Yellow" and the "Power Edge" trade dress, as well as corporate and product identity used herein, are trademarks of Caterpillar and may not be used without permission.

