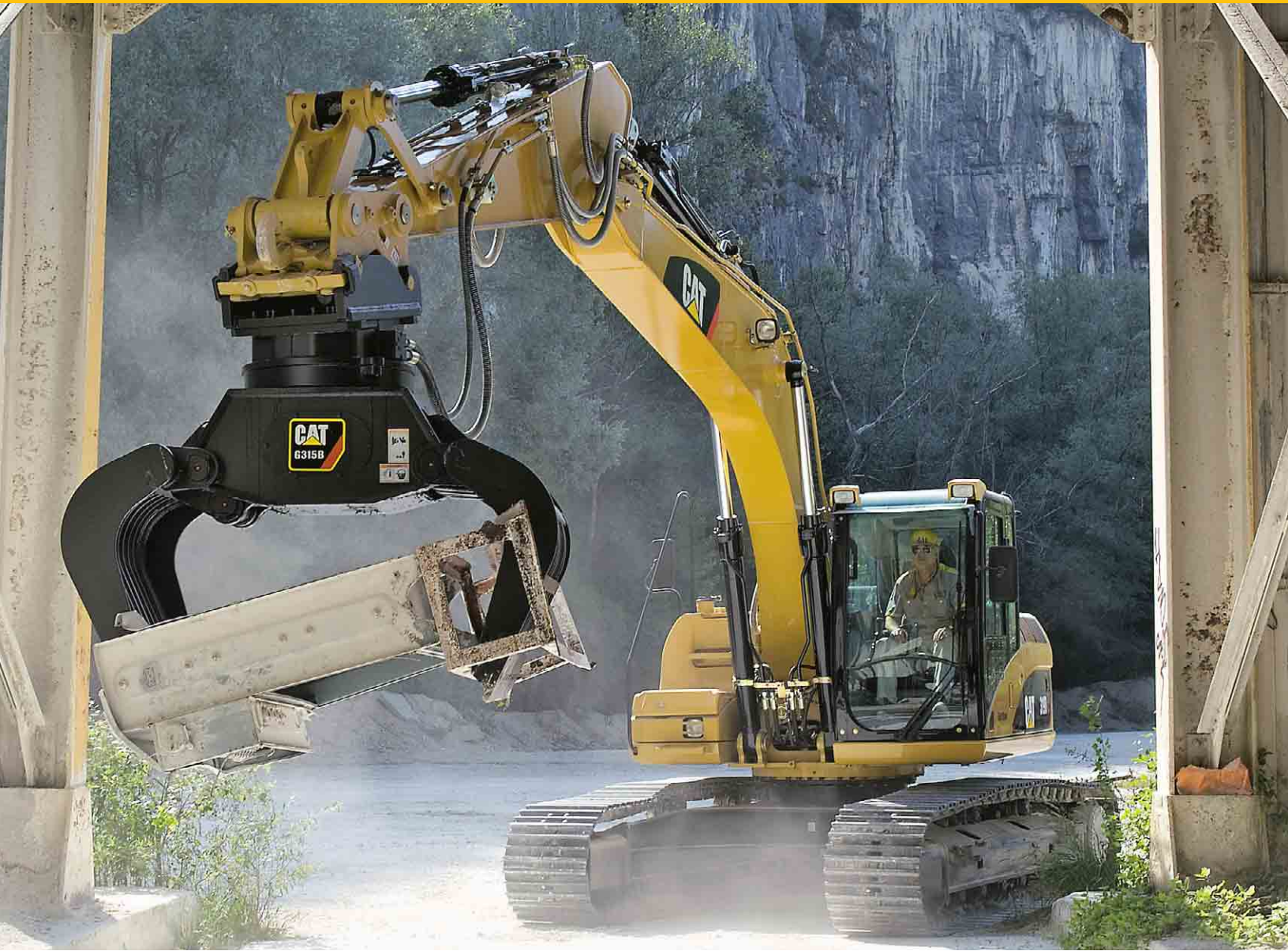


G310B, G315B, G320B

Multi-Grapples for Hydraulic Excavators



Features

Two shell types available:
demolition and recycling

Standard drill pattern for bolt-on mounting brackets

Bolt-on cutting edges as standard

Easy assemble/disassemble of main components

High quality bushings with lubrication grooves,
hardened pins and internal dust seals

Benefits

Unique design to ensure optimal performance
in your specific application.

Easy interchange with other work tools.

Quick replacement of wear parts.

Lower maintenance costs.

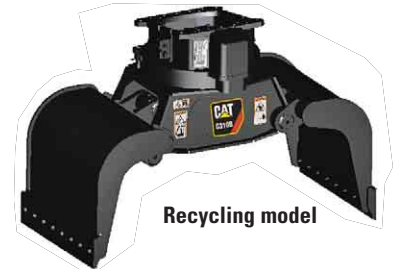
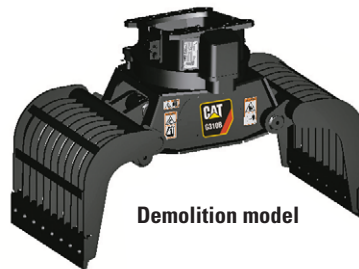
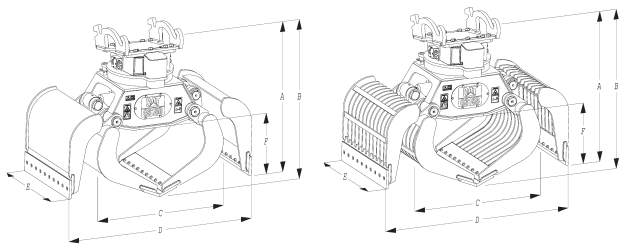
Optimal protection against wear and damage.

G310B, G315B, G320B Multi-Grapples

Specifications and Dimensions

		G310B-R	G310B-D	G315B-R	G315B-D	G320B-R	G320B-D
Recommended carrier weight	metric ton	10-16	10-16	15-22	15-22	20-29	20-29
Capacity	Liters	400	375	600	550	800	750
Operating weight*	kg	1045	1035	1395	1385	1960	1970
Closing force	kN	36	36	52	52	66	66
Maximum pressure open/close	bar	350	350	350	350	350	350
Optimal flow open/close	l/min	60	60	90	90	120	120
Maximum pressure rotation	bar	140	140	140	140	140	140
Optimal flow rotation	l/min	40	40	40	40	40	40
E Width	mm	850	850	1000	1000	1100	1100
C Width closed	mm	1225	1245	1360	1375	1505	1540
D Width opened	mm	1800	1800	2000	2000	2200	2200
F Height	mm	520	520	570	570	625	625
B Height closed*	mm	1440	1440	1550	1550	1725	1725
A Height opened*	mm	1350	1350	1455	1455	1630	1630

* Including bolt-on mounting bracket



Hydraulic Requirements

Two way hydraulic high pressure lines for opening/closing and two way hydraulic medium pressure lines for rotation controlled by joystick in the cab or pedal according to customer's choice.

Matching Guide

Multi-Grapples

Hydraulic Excavators

G310B	312C, 315C, M313C, M313D, M315C, M315D, M316C, M316D
G315B	315C, 318C, 319C, 319D, 320C/320D, 321C LCR, 323D, M313C, M313D, M315C, M315D, M316C, M316D, M318C, M318D, M322C, M322D
G320B	318C, 319D, 320D, 321C, 323D, 322C, 324D, M318D, M322D, 330C UHD, 330D UHD, 345C UHD, 365C UHD, 385C UHD

For more complete information on Cat products, dealer services, and industry solutions, visit us on the web at www.cat.com

HEHX3150-3 (01/2008) hr

© 2007 Caterpillar -- All Rights Reserved

Materials and specifications are subject to change without notice. Featured machines in photos may include additional equipment. See your Caterpillar dealer for available options.

CAT, CATERPILLAR, their respective logos, "Caterpillar Yellow" and the POWER EDGE™ trade dress, as well as corporate and product identity used herein, are trademarks of Caterpillar and may not be used without permission.

CATERPILLAR®
TODAY'S WORK. TOMORROW'S WORLD.™