



Cat[®] TH337

Telehandler

Specifications

Engine

Model			
Standard	Cat [®] C4.4 DITAAC		
Optional	Cat [®] C4.4 DITAAC-ACERT		
Gross Power			
Standard	74.5 kW	101 hp	
Optional	93.1 kW	126 hp	
Maximum Torque			
Standard	410 Nm/1400 rpm		
Optional	499 Nm/1500 rpm		
Bore	105 mm		
Stroke	127 mm		
Displacement	4.4 litre		
• All engine horsepower (hp) are metric.			

Weights

Operating Weight	7073 kg
------------------	---------

Operating Specifications

Rated Load Capacity	3300 kg
Maximum Lift Height	7300 mm
Maximum Forward Reach	3763 mm
Top Travel Speed	40 kph
Load at Max Height	2000 kg
Load at Max Reach	1000 kg

Service Refill Capacities

Fuel Tank	150 litre
Hydraulic Tank	90 litre

Tyres

Standard	15.5/80-24 16PR
----------	-----------------

Brakes

Service Brakes	Servo assisted on front axle
Parking Brakes	Mechanical on front axle

Hydraulic System

Maximum System Pressure	250 bar
Maximum Pump Flow	113 litre/min
Pump Type	Variable Displacement Load Sensing Axial Piston Pump
Auxiliary Hydraulic Supply	
Intermittent	80 litre/min
Continuous	60 litre/min

Transmission Speeds

Forward	
1	7 kph
2	12 kph
3	21 kph
4	32 kph
5	40 kph
Reverse	
1	7 kph
2	12 kph
3	21 kph

Boom Performance

Boom Up	8.5 Seconds
Boom Down	6.1 Seconds
Tele In	6.0 Seconds
Tele Out	6.0 Seconds
Crowd Forward (dump)	3.0 Seconds
Crowd Backward	3.0 Seconds
Combined	
Up and Out	12.5 Seconds
Down and In	7.6 Seconds
Drawbar Pull 74.5 kW	83,4 kN
Drawbar Pull 93.1 kW	87,8 kN
Bucket Breakout force to ISO 8313	65 kN

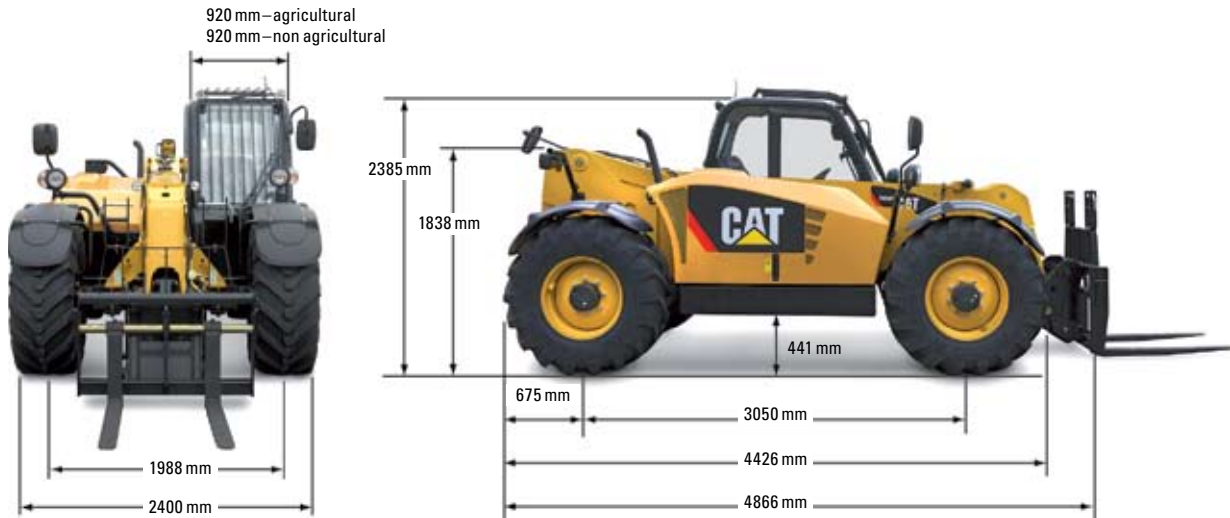
Sound

Operator Sound	78 dB(A)
----------------	----------

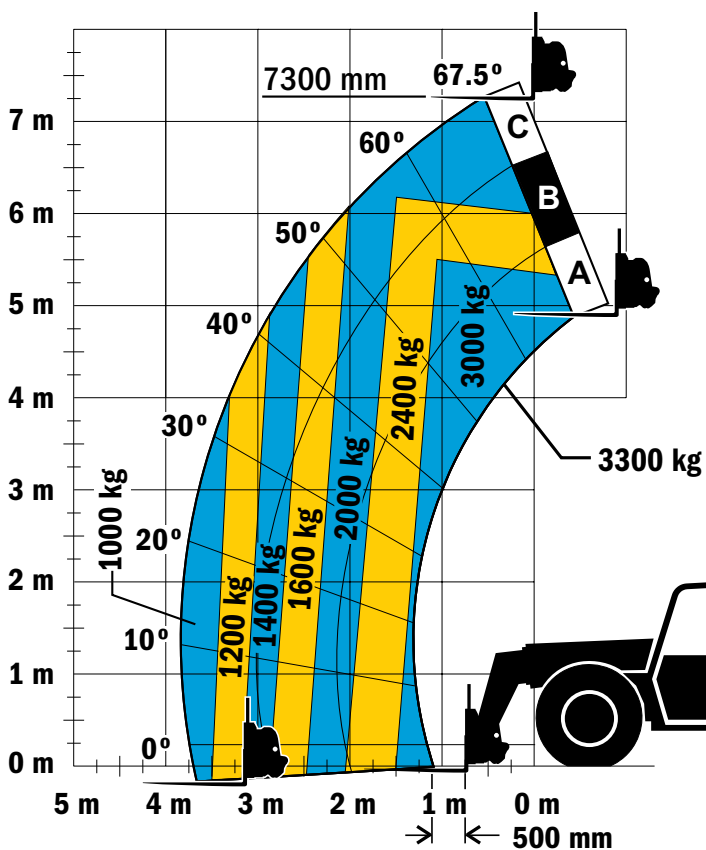
TH337 Telehandler

Dimensions

All dimensions are approximate.



Load Chart and Dimensions



IMPORTANT

Rated lift capacities shown are with machine equipped with carriage and pallet forks. The machine must be level on a firm surface with undamaged, properly inflated tires. Machine specifications and stability are based on rated lift capacities at specific boom angles and boom lengths. (If specifications are critical, the proposed application should be discussed with your dealer.)

DO NOT exceed rated lift capacity loads, as unstable and dangerous machine conditions will result.

DO NOT tip the machine forward to determine the allowable load.

Due to continuous product improvements, machine specifications and/or equipment changes may be made without prior notification.