

# Model 600SC

## TELESCOPIC BOOM LIFTS



### GREATER PLATFORM CAPACITY

- Newly designed with 15% more unrestricted platform capacity than previous model. Dual platform capacity available.

### MORE PRODUCTIVE

- Equipped with track drive for easier manoeuvrability on muddy terrain.
- Reaches full height quicker for increased productivity on the job site.

### MORE ACCESS

- Large work envelope for a wide range of motion.

### MORE COMFORT

- Increased operator comfort due to end of cylinder stroke dampening.

### Standard Features

- 0.91 m x 1.83 m low mount platform
- Side entry with drop bar mid rail
- Multiple function operation
- Full proportional drive joystick control with integral thumb steer switch
- Full proportional main boom and swing joystick control
- Multiple speed control for telescope and platform rotate
- Selectable creep speed on drive / lift and swing functions
- 160 degree powered platform rotator
- Platform console machine status light panel <sup>1</sup>
- Load sensing system
- AC cable to platform
- Engine distress warning/shut down system <sup>2</sup>
- Gull-wing hoods
- Swing-out engine tray
- Control ADE<sup>®</sup> - Advanced Design Electronics System
- Hydrostatic drive transmission
- Horn
- 5 degree tilt alarm and indicator light
- Steel tracks
- Lifting/tie down lugs
- Hour meter
- Ground control selector switch with key lock
- Platform tool tray
- 12V DC auxiliary power
- Hydraulic oil cooler
- Cast Aluminum Control Box
- JLG Skyguard active system

<sup>1</sup> Provides indicator lights at platform control console for system distress, low fuel, tilt light, and foot switch status.

<sup>2</sup> Low oil pressure and high coolant temperature alarms with shut-down enabled/disabled by analyser.

### Standard Specifications

Power Source	
• Diesel Engine - Deutz TD 2.9 L4	50kW
• Fuel Tank Capacity	117 L
Hydraulic System	
• Hydraulic System	129 L
• Auxiliary Power	12V DC

### Accessories & Options

- 0.91 m x 2.44 m low mount platform
- 0.76 m x 0.89 m low mount platform <sup>7</sup>
- Side entry with drop bar mid rail
- Side entry with inward swing gate
- 13 mm air line to platform
- Rubber Track Pads
- On-board 4,000 W generator
- SkyPower<sup>®</sup> package 7,500 watt on-board generator
- SkyWelder<sup>®</sup> package 250 amp welder in the platform <sup>3</sup>
- All motion alarm
- Alarm package <sup>4</sup>
- Light package <sup>5</sup>
- Head and tail lights
- Platform flood lights
- Chassis illumination lights
- Flashing amber beacon
- Euro Plug & Socket
- Hostile environment kit <sup>6</sup>
- Skyguard beacon
- Generator hourmeter
- Synthetic Biodegradable Hydraulic Oil
- Biodegradable Hydraulic Oil
- Fire Resistant Hydraulic Oil
- Platform worklights
- Special paint colour

<sup>3</sup> Available when integrated with the SkyPower<sup>®</sup> package.

<sup>4</sup> Includes all-motion alarm and flashing amber beacon.

<sup>5</sup> Includes platform mounted work lights and head & tail lights.

<sup>6</sup> Includes console cover, boom wipers and cylinder bellows.

<sup>7</sup> Available only with drop bar mid rail.

# Model 600SC

## TELESCOPIC BOOM LIFTS

### Performance

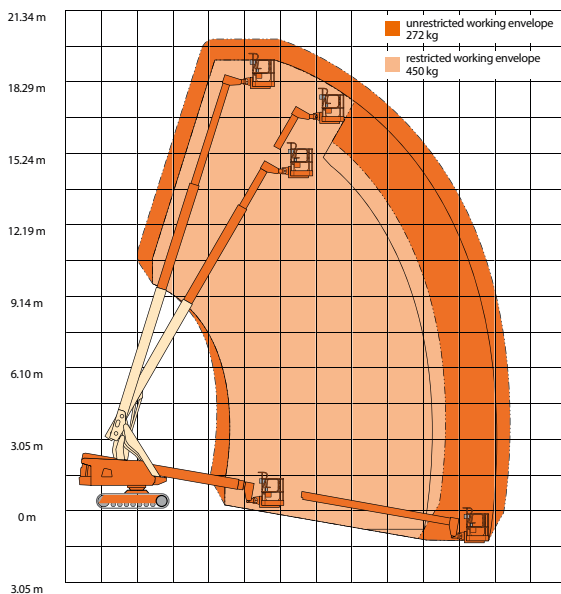
Working Height	20.11 m
Working Outreach	15.97 m
Swing (continuous)	360°
Platform Capacity - Unrestricted	🧑🧑 / 270 kg
Platform Capacity - Restricted	🧑🧑🧑 / 455 kg
Platform Rotator (hydraulic)	160°
A. Platform Size	0.91 m x 1.83 m
B. Overall Width	2.49 m
C. Tailswing (working condition)	1.22 m
D. Stowed Height	2.50 m
E. Stowed Length	8.71 m
F. Wheelbase	2.76 m
G. Ground Clearance	0.59 m
Machine weight <sup>1</sup>	11,767 kg
Maximum Ground Bearing Pressure	TBC
Drive Speed	2.57 km/h
Gradeability	55%
Turning Radius	Zero
Type of Tracks <sup>2</sup>	Steel
Track Width	0.50 m

<sup>1</sup> Certain options or country standards may increase weight and/or dimensions.

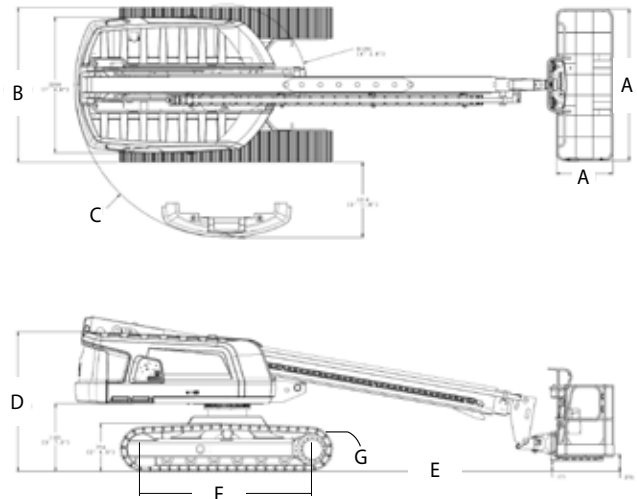
<sup>2</sup> Optional detachable rubber pads available



### Reach Diagram



### Dimensions



### IMPORTANT

JLG is continually researching and developing products and reserves the right to make modifications without prior notice. All data in this document is indicative. Certain options or country standards will increase weight. Specifications may change to meet country standards or with the addition of optional equipment.

Due to continuous product improvements, JLG Industries reserves the right to make specification and/or equipment changes without prior notification.

# JLG®

### JLG EMEA BV

Polaris Avenue 63  
2132 JH Hoofddorp  
The Netherlands  
Phone: +31 (0)23 565 5665  
[www.jlg.com](http://www.jlg.com)

An Oshkosh Corporation Company