

345C MH Material Handler



345C MH Two-piece Fronts by Caterpillar®

The two-piece fronts meet your material handling needs with excellent lift performance and working range whether operating in close or at full reach. Built for strong performance and long service life.

C13 Engine with ACERT® Technology

ACERT Technology works at the point of combustion to optimize engine performance and provide low exhaust emissions with exceptional performance capabilities and proven reliability.

Structures

The 345C MH structural components are the backbone of the machine's durability.

Cat® Material Handler Hydraulic Systems

The 345C MH hydraulic system is designed to handle the specific requirements of the Material Handling Industry.

Work Tools

The Orange Peel Grapples offered maximize performance of the 345C Material Handler.

Additional Features

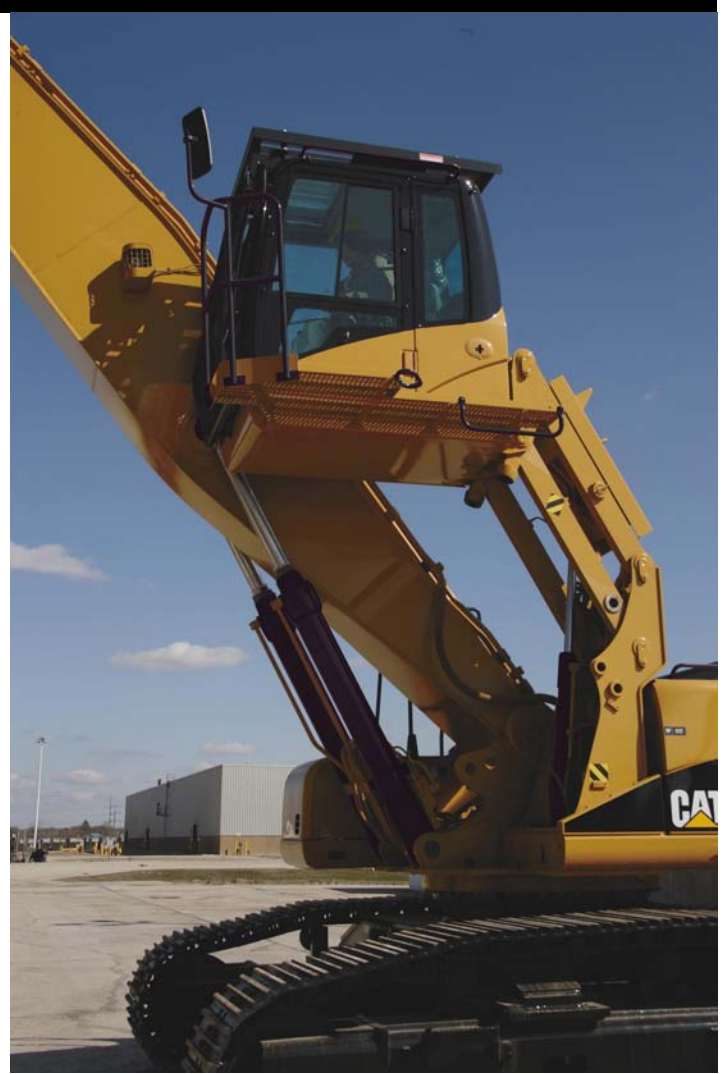
The 345C MH has been designed with many benefit adding features to enhance the machine's performance in material handling applications.

Serviceability

Simplified service and maintenance features save you time and money.

Complete Customer Support

Cat Dealer services help you operate longer with lower costs.



345C Material Handler

Specifications

Engine	
Engine Model	Cat® C13 ACERT™
Net Power - ISO 9249	239 kW
Net Power - EEC 80/1269	239 kW
Bore	130 mm
Stroke	157 mm
Displacement	12.5 L

- The C13 meets EU Stage IIIA exhaust emissions requirements.
- Net power advertised is the power available at the flywheel when the engine is equipped with fan, air cleaner, muffler, and alternator.
- No engine derating needed up to 2300 m.

Weights	
Operating Weight	57 431 kg
Upper	15 595 kg
Counterweight	12 000 kg
Undercarriage (includes carbody)	21 180 kg
Two-Piece Front (with cylinders)	8655 kg

- All weights shown are for machines equipped with 750 mm (30") track, full fuel tank, and operator.

Service Refill Capacities	
Fuel Tank	705 L
Cooling System	61 L
Engine Oil	42 L
Swing Drive	10 L
Final Drive (each)	15 L
Hydraulic System (including tank)	570 L
Hydraulic Tank	243 L

Drive	
Maximum Drawbar Pull	331 kN
Maximum Travel Speed	4.4 km/h

- Each track is driven by one independent, automatic shifting, two-speed slipper type piston hydraulic motor via integral planetary final drives.
- Multiple disc brakes have increased braking capacity, are spring-engaged and pressure released.
- Each drive module is well integrated into the roller frame for total protection.

Hydraulic System	
Maximum Flow (each of two pumps)	360 L/min
Max. Pressure Implements	34 350 kPa
Max. Pressure Travel	34 350 kPa
Max. Pressure - Swing	31 400 kPa
Pilot System Max. Flow	43 L/min
Pilot System Max. Pressure	4110 kPa
Rotate Circuit for Grapple Max. Flow	41.6 L/min
Rotate Circuit for Grapple Operating Pressure	27 579 kPa

- Two, variable-displacement, axial-piston pumps power the boom, stick, grapple swing and travel circuits.
- Snubbers at the rod ends of the boom cylinders and at both ends of the stick cylinders.

Track	
Track Shoes	750 mm
Gauge	3720 mm
Shoes (each side)	52
Rollers (each side)	9
Overall Track Length	5360 mm

- Robot-welded, pentagonal track roller frames with hydraulic adjusters.
- Sealed and lubricated rollers and idlers.
- Sealer track with triple grouser shoes.

Swing Mechanism	
Swing Torque	149 kN·m
Swing Speed	8.6 RPM

Cab	
Cab/FOGS Standards	Cab/FOGS meet ISO 10262 standard requirements.

- Some applications and/or attachments may require additional cab guarding. Please contact your Caterpillar dealer for further information.

Brakes	
Brake Standards	Meets ISO 10265 standard requirements.

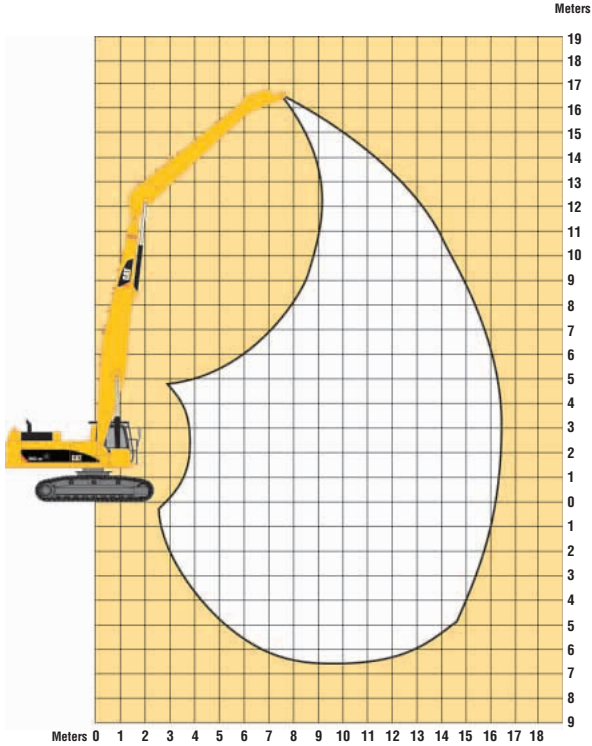
- SERVICE BRAKE FEATURES
 - Two wet, multiple-disc brakes are used on the final drive input shafts.
 - Spring-applied, hydraulically released.
- PARKING BRAKE FEATURES
 - Wet, multiple-disc brakes.
 - Spring applied, hydraulically released.

345C Material Handler

Working Ranges

Machine equipped with 16.5 m front linkage.

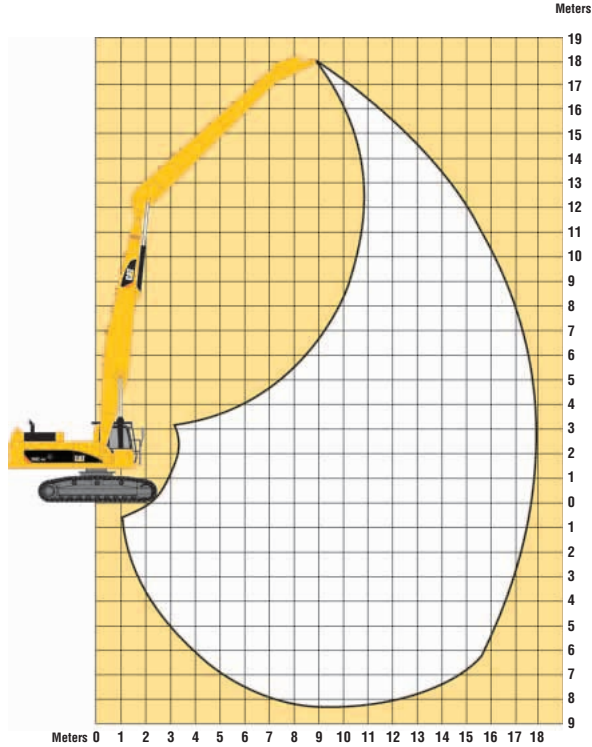
Maximum reach	16.5 m
Maximum height	16.9 m



Working Ranges

Machine equipped with 18.0 m front linkage.

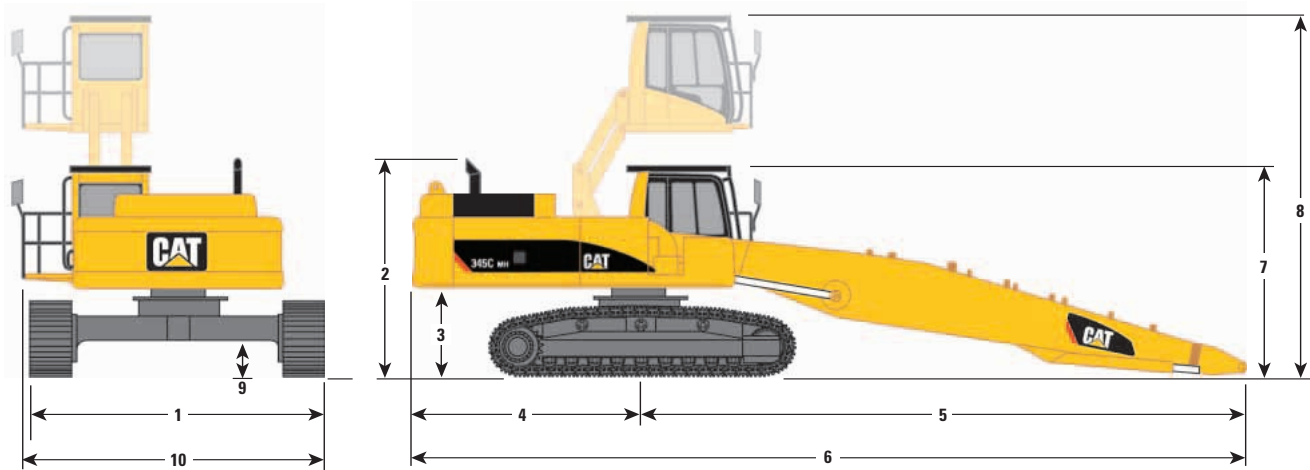
Maximum reach	18.0 m
Maximum height	18.0 m



345C Material Handler

Dimensions

All dimensions are approximate.



1 Shipping Width	3970 mm
2 Height to Top of Exhaust	3604 mm
3 Counterweight Clearance	1474 mm
4 Tail Swing Radius	3763 mm
5 Swing Center to End of Boom	10 098 mm
6 Rear of Carrier to End of Boom	13 861 mm
7 Shipping Height – Cab Lowered	3693 mm
8 Operating Height – to top of cab with FOGS	6288 mm
9 Ground Clearance	743 mm
10 Operating Width	4470 mm

345C Material Handler

Lift Capacities

345C MH with 750 mm Track

BOOM – 9.9 m
STICK – 9.1 m

MAX REACH – 18 m
MAX HEIGHT – 18 m

Lift Point Height	4.5 m		6.0 m		7.5 m		9.0 m		10.5 m		12.0 m		13.5 m		15.0 m		16.5 m		18.0 m		Maximum Reach					
	Over Front	Over Side	Over Front	Over Side	Over Front	Over Side	Over Front	Over Side	Over Front	Over Side	Over Front	Over Side	Over Front	Over Side	Over Front	Over Side	Over Front	Over Side	Over Front	Over Side	Over Front	Over Side	m			
16.5 m	kg									*6600	*6600											*5800	*5800	11.1		
15.0 m	kg									*8000	*8000	*6500	*6500										*5300	*5300	12.8	
13.5 m	kg											*7700	*7700	*6100	*6100								*5000	*5000	14.1	
12.0 m	kg											*8100	*8100	*7300	*7300	*5300	*5300						*4900	*4900	15.2	
10.5 m	kg											*8100	*8100	*7600	*7600	*6600	*6600						*4800	*4800	16.1	
9.0 m	kg									*9000	*9000	*8200	*8200	*7600	*7600	*7000	6600	*5300	*5300				*4700	*4700	16.8	
7.5 m	kg									*9200	*9200	*8400	*8400	*7700	*7700	*7100	6500	6300	5400				*4700	*4700	17.3	
6.0 m	kg									*10 700	*10 700	*9600	*9600	*8600	*8600	*7800	7600	*7100	6400	6200	5400		*4800	4700	17.7	
4.5 m	kg									*13 200	*13 200	*11 400	*11 400	*10 000	*10 000	*8900	*8900	*8000	7400	7200	6200	6100	5300	*4900	4500	17.9
3.0 m	kg	*23 400	*23 400	*17 600	*17 600	*14 200	*14 200	*12 000	*12 000	*10 300	*10 300	*9100	8600	*8100	8000	7200	7000	6000	6000	5200	*5100	4400	*5000	4400	18	
1.5 m	kg	*23 600	*23 600	*19 100	*19 100	*15 100	*15 100	*12 400	*12 400	*10 600	10 100	*9200	8300	8000	6900	6800	5900	5900	5100	5100	4400	5100	4400	4400	18	
0.0 m	kg	*8900	*8900	*19 700	*19 700	*15 500	*15 500	*12 700	12 000	*10 700	9600	*9200	8000	7800	6700	6700	5700	5800	5000				5100	4400	17.9	
-1.5 m	kg	*7100	*7100	*14 200	*14 200	*15 400	14 800	*12 600	11 500	*10 600	9300	9000	7700	7600	6500	6600	5600	5700	4900				*4900	4400	17.6	
-3.0 m	kg	*7000	*7000	*11 700	*11 700	*14 800	14 300	*12 200	11 100	*10 300	9000	*8800	7500	7500	6400	*6400	5500	*5200	4800				*4600	*4500	17.2	
-4.5 m	kg	*7300	*7300	*11 000	*11 000	*13 600	*13 600	*11 400	10 900	*9600	8800	*8100	7400	*6900	6300	*5700	5500	*4400	*4400				*4200	*4200	16.7	
-6.0 m	kg	*7800	*7800	*11 100	*11 100	*11 900	*11 900	*10 100	*10 100	*8500	*8500	*7200	*7200	*5900	*5900	*4700	*4700						*3700	*3700	16	
-7.5 m	kg			*11 200	*11 200	*9700	*9700	*8300	*8300	*7000	*7000	*5800	*5800	*4600	*4600											

* Indicates that the load is limited by hydraulic capacity rather than tipping capacity. Rated loads do not exceed 87% of hydraulic lifting capacity or 75% of tipping capacity.

Lift Capacities

345C MH with 750 mm Track

BOOM – 9.9 m
STICK – 7.4 m

MAX REACH – 16.5 m
MAX HEIGHT – 16.9 m

Lift Point Height	4.5 m		6.0 m		7.5 m		9.0 m		10.5 m		12.0 m		13.5 m		15.0 m		Maximum Reach									
	Over Front	Over Side	Over Front	Over Side	Over Front	Over Side	Over Front	Over Side	Over Front	Over Side	Over Front	Over Side	Over Front	Over Side	Over Front	Over Side	Over Front	Over Side	m							
16.5 m	kg																*7900	*7900	8.3							
15.0 m	kg							*9400	*9400								*7100	*7100	10.5							
13.5 m	kg									*9300	*9300	*6800	*6800				*6600	*6600	12.1							
12.0 m	kg									*9600	*9600	*8900	*8900				*6300	*6300	13.3							
10.5 m	kg									*9700	*9700	*8900	*8900	*8000	7600		*6200	*6200	14.3							
9.0 m	kg									*10 900	*10 900	*9800	*9800	*8900	*8900	*8100	7600	*6300	*6300	*6100	*6100	15.1				
7.5 m	kg									*11 300	*11 300	*10 100	*10 100	*9100	*9100	*8200	7500	7200	6300	*6100	5800	15.7				
6.0 m	kg									*13 800	*13 800	*11 800	*11 800	*10 400	*10 400	*9200	8900	*8300	7400	7100	6200	*6200	5500	16.1		
4.5 m	kg	*24 100	*24 100	*18 200	*18 200	*14 700	*14 700	*12 300	*12 300	*10 700	10 600	*9400	8600	8300	7200	7000	6100	6100	5300				5300	4500	16.3	
3.0 m	kg	*16 800	*16 800	*19 500	*19 500	*15 400	*15 400	*12 800	12 700	*10 900	10 200	*9500	8300	8100	7000	6900	6000	6000	5100				5100	4500	16.5	
1.5 m	kg	*6700	*6700	*20 100	*20 100	*15 800	15 700	*13 000	12 100	*11 000	9800	9400	8100	7900	6800	6800	5800	5900	5100				5100	4500	16.5	
0.0 m	kg	*5700	*5700	*12 600	*12 600	*15 700	15 000	*12 900	11 700	*10 900	9500	9200	7900	7800	6700	6700	5700	*5700	5100				5100	4500	16.3	
-1.5 m	kg	*6100	*6100	*10 800	*10 800	*15 000	14 600	*12 400	11 300	*10 500	9200	*8900	7800	*7600	6500	*6300	5700	*5400	5200				5200	4500	16	
-3.0 m	kg	*6900	*6900	*10 600	*10 600	*13 800	*13 800	*11 500	11 100	*9800	9100	*8300	7600	*6900	6500	*5600	*5600	*4900	*4900				4900	4500	15.6	
-4.5 m	kg			*11 100	*11 100	*12 000	*12 000	*10 200	*10 200	*8600	*8600	*7300	*7300	*5900	*5900			*4400	*4400						15	
-6.0 m	kg					*9600	*9600	*8300	*8300	*7100	*7100	*5800	*5800													

* Indicates that the load is limited by hydraulic capacity rather than tipping capacity. Rated loads do not exceed 87% of hydraulic lifting capacity or 75% of tipping capacity.

Always refer to the appropriate Operation and Maintenance Manual for specific product information.

345C Material Handler

Standard Equipment

Standard equipment may vary. Consult your Caterpillar dealer for details.

Stick and Boom

9.9 m One Piece MH Boom. Includes high pressure tig welded steel tubes.

Electrical

75 Ampere alternator
Base machine light (Frame)
Lights, cab mounted (Two)
Horn - Signal warning
Lights, Boom and Stick (Four)

Operator Environment

Tempered windows except laminated glass in retractable front windshield, 70/30 tempered glass in removable lower windshield and sliding upper door window
Seat, suspension with high backseat with headrest, adjustable arm rest and retractable cloth seat belt
Monitor
Full graphic color display
Start up level check for hydraulic and engine oil and engine coolant
Working hour information
Machine condition, Error code and tool mode setting information
AM/FM radio with two stereo speakers (includes antennae) and two 24V to 12V converters
Openable polycarbonate skylight with sunshade
Windshield wiper / washers (upper/lower)
Positive filtered ventilation
Air conditioner with auto climate control and defroster
Instrument panel and gauges
Hydraulic filter warning light
Interior lighting
Coat hook
Ashtray with lighter
Literature compartment
Storage compartment with cover suitable for lunch box
Neutral lever for all controls
Joysticks, pilot operated, adjustable with integral electrical switches for operation of grapple rotate and magnet lift drop
Toggle switch in RH console to switch between magnet and grapple operation
Travel control pedals with removable hand levers
Floor mat
Beverage holder
FOGS guard
Rear window exit
Rear view camera

Power Train

Cat C-13 Diesel engine with 24-volt electric starting
Emission package to meet Stage IIIA
Automatic engine speed control with manual return to idle
Water separator in fuel line with level alarm
Water level indicator
S•O•S Sampling for engine and hydraulic systems
Two speed auto-shift travel
Side-by-Side cooling system with swing out fuel cooler
Separately mounted AC condenser
Variable-speed cooling fan
Muffler
Fuel Filter and Fuel Cooler

Undercarriage

Wide carbody with swivel guard
Hydraulic track adjusters
Track-type sealed undercarriage
Idler and center section track guiding guards
750mm Triple grouser shoes (52 sections)
Grease lubricated track
Heavy duty track motor guards

Hydraulic Systems

Fully pressurized hydraulic system
Auxiliary pump and lines to drive generator
Medium pressure auxiliary hydraulic circuit for powering rotating grapples (includes pump, valves and lines)
High pressure grapple open close hydraulic circuit
SmartBoom™

Other Standard Equipment

Heavy duty upper frame with bottom guards
Door locks, cap locks and Caterpillar one-key security system
Mirrors (Frame-right, Cab-left)
12000 kg MH Counterweight
Automatic swing parking brake
Travel alarm
Cold weather starting aids- cold weather batteries, ether aid, and jumpstart receptacle
Sun Screen
Product link

345C Material Handler

Optional Equipment

Optional equipment may vary. Consult your Caterpillar dealer for details.

Fan, Hydraulic, Auto Reversing

Grapples, Orange Peel

1.53 m³ for 7.3 m MH stick

1.15 m³ for 9.1 m MH stick

One of two stick options MUST be chosen

Stick, 7.3 m Material Handling for 16.5 m front

Stick, 9.1 m Material Handling for 18 m front

345C Material Handler

Materials and specifications subject to change without notice.

Featured machines in photo may include additional equipment.

For more complete information on Cat products, dealer services, and industry solutions, visit us on the web at www.cat.com.

© 2008 Caterpillar
All Rights Reserved.

CAT, CATERPILLAR, ACERT, SAFETY.CAT.COM their respective logos, "Caterpillar Yellow," and the POWER EDGE trade dress, as well as corporate and product identity used herein, are trademarks of Caterpillar and may not be used without permission.

Product ID: 345C MH EAME (MSSW)

